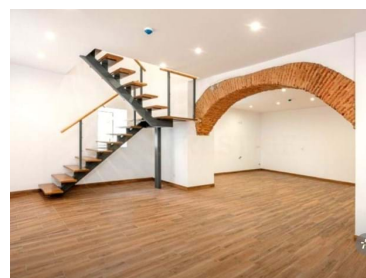




Santa Maria Maior - Commercial property



2

Bathrooms



115

Area (m²)



115

Land Area (m²)



535 000 €

(EUR €)

Restaurant in Lisbon (Alfama)

Commercial space in the heart of Alfama, next to the Fado Museum.

In one of the most typical and emblematic neighborhoods of Lisbon, you will find this renovated space, with 115 m2 of useful area, 2 toilets and divided into 2 floors with independent entrances. With countless potential to enjoy 2 different businesses or even expand to a single business.

Entrance to the upper floor on a pedestrian street with the movement that characterizes the Alfama neighborhood. The lower floor gives access to a typical and cozy esplanade characteristic of the neighborhood.

The property is leased until June 2025, providing a monthly income of €2,000.

Property eligible for Golden Visa.

Don't miss the opportunity to schedule a visit!



Hadyna Barbosa

+351925684346 ²

hadyna.barbosa.casaprestige@gmail.com

T +351 939943024 ² · E geral@casaprestige.pt

Avenida do Atlântico, n. 16 - 14º Andar Escritório 8, 1990-019 Lisboa
AMI 16783

¹ (Call to national fixed network) | ² (Call to national mobile network)



CP004

Reference

Scan the QR code to view the property



Property Features

- Proximity: Airport, Shopping, Restaurants, City, Hospital, Pharmacy, Public Transport, Schools, Playground
- Garden
- Built year: 1996
- Wine cellar
- Views: City view
- Parking space
- Mains water
- Electricity: Main grid
- Garden
- Terrace
- Floors: 2
- Basement
- Main drainage
- Energetic certification: B
- Water: Main grid



Hadyna Barbosa

+351925684346 ²

hadyna.barbosa.casaprestige@gmail.com

T +351 939943024 ² · E geral@casaprestige.pt
Avenida do Atlântico, n. 16 - 14º Andar Escritório 8, 1990-019 Lisboa
AMI 16783

¹ (Call to national fixed network) | ² (Call to national mobile network)